

Colour Selector

The Colour Selector contains products that are for use on interior and exterior applications. It includes warrantable products up to 10 years and non-warrantable products.

	NON-HABITABLE	RESIDENTIAL ←4 LEVELS	RESIDENTIAL →3 LEVELS	COMMERCIAL ←4 LEVELS	COMMERCIAL →3 LEVELS	PRESTIGIOUS COMMERCIAL	MONUMENTAL
INTERIOR	•	•	•	•	•	•	•
EXTERIOR	•	•					

Dulux World of Colour®
Powder Coat Series

Australian Collection



Dulux Powder Coat Colour Selector

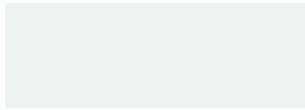
DURALLOY[®]
POWDERCOAT RANGE



AS 3715

AAMA 2603

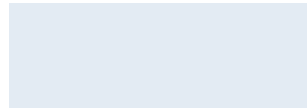
Subtle and neutral solid colours including the Colorbond[®] steel standard colour range delivered with warranty grade* advanced durable polyester thermosetting powder. See product suitability tables for recommended usage.



PEARL WHITE
Gloss 2721114G Gloss 2601229G RC



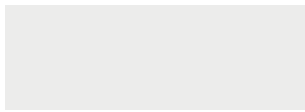
CLASSIC PEARL WHITE
Gloss 27281880 Gloss 2601228G RC



BRIGHT WHITE
Gloss 26084636 RC Gloss 27284636



EVENING HAZE[®] CB
Satin 2723055S Matt 2603168M RC



OYSTER
Matt 26036858 RC Matt 27236858



SURFMIST[®] CB
Satin 2721137S Satin 2601137S RC
Matt 2603167M RC



GREY NURSE
Gloss 26050060 RC



COVE[®] CB
Satin 2606250S RC Matt 2606252M RC



APO GREY
Satin 26032786 RC Satin 27232786



ANOTEC[®] SILVER GREY
Matt 27251272



SHALE GREY[®] CB
Satin 26083246 RC Satin 27283246
Matt 2607557M RC



PALE EUCALYPT[®] CB
Satin 2606127S RC Matt 2606303M RC



WINDSPRAY[®] CB
Satin 2607256S RC Satin 2727256S
Matt 2607559M RC



DUNE[®] CB
Matt 2607558M RC Satin 2723087S
Satin 2603087S RC



WEDGEWOOD
Satin 27250279



WILDERNESS[®] CB
Satin 27284224



OLDE PEWTER
Satin 26050243 RC Satin 27250243



STONE GREY
Satin 26078126 RC Satin 27278126



BLUE RIDGE[®] CB
Satin 27288480



MANGROVE[®] CB
Satin 2606262S RC



NOTRE DAME
Gloss 26036672 RC Gloss 27236672



WALLABY[®] CB
Satin 2607474S RC Matt 2607476M RC



DEEP OCEAN[®] CB
Satin 2605125S RC Satin 2725125S
Matt 2605267M RC



COTTAGE GREEN[®] CB
Satin 26084219 RC Satin 27284219
Matt 2606304M RC



BERRY GREY
Satin 26088362 RC Gloss 2727262G



BASALT[®] CB
Satin 2607473S RC Matt 2607475M RC



CHARCOAL
Satin 26088351 RC Satin 27288351
Gloss 2729086G



CLASSIC HAWTHORN GREEN
Gloss 27233709



IRONSTONE[®] CB
Satin 2607257S RC Satin 2727257S
Matt 2607556M RC



ANOTEC[®] DARK GREY
Matt 2725127S Matt 2607538M RC



BLACK
Gloss 2609132G RC Gloss 2729090G



DEEP BRUNSWICK GREEN
Gloss 2606134G RC Gloss 2726134G

RC RapidCure Technology enables a possible reduction in energy consumption through lower cure temperatures, and or faster line speeds.

CB Colorbond[®] and the Colorbond colour names are registered trademarks of Bluescope Steel Limited.



PRECIOUS® POWDERCOAT RANGE



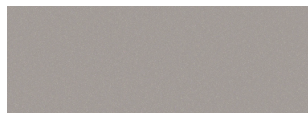
Beautiful decorative pearlescent colours delivered with warranty grade* advanced durable polyester thermosetting powder. See product suitability tables for recommended usage.



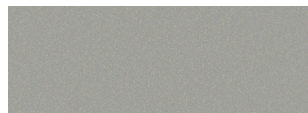
* All Dulux Duralloy® and Precious® products are supported by Dulux Alumi Shield and Dulux Steel Shield warranties when applied by a Dulux Accredited Powder Coater to the warranty specification on recommended project types and conditions. For more information visit duluxpowders.com.au/warranties



NATURAL PEARL
Matt 97189119



SHARP SILVER KINETIC® PEARL
Satin 9717238K



SILVER KINETIC® PEARL
Satin 9717043K



COPPER KINETIC® PEARL
Satin 9717183K



ESSENTIAL SILVER PEARL
Matt 2603146Q RC



ST ELMOS FIRE KINETIC® PEARL
Satin 9717208K



PEWTER PEARL
Satin 97188202



CHAMPAGNE KINETIC® PEARL
Matt 9713059K



PLATYPUS KINETIC® PEARL
Satin 9717214K



TYPHOON PEARL
Satin 2607469Q RC



GUNMETAL KINETIC® PEARL
Satin 9718115K



BRONZE PEARL
Satin 97194686



METROPOLIS® BRONZE PEARL
Satin 97159003



STEEL PEARL
Satin 97157127



ONYX PEARL
Gloss 97152052



CHARCOAL METALLIC PEARL
Gloss 97118796

ALPHATEC®
POWDERCOAT RANGE



Fun, bright solid colours for a big impact delivered with tough polyester thermosetting powder. See product suitability tables for recommended usage.



LEMON YELLOW
Gloss 98432120



SAFETY YELLOW
Gloss 9842015G Gloss 2652162G RC



BLAZE BLUE
Gloss 98419941 Gloss 2655268G RC



BRIGHT SILVER METALLIC
Gloss 96151491



YELLOW GOLD
Gloss 98433617 Gloss 2652188G RC



ORANGE X15
Gloss 98451439 Gloss 2654293G RC



FRENCH BLUE
Gloss 98432725



TRANSFORMER GREY
Gloss 98432186



COPPER PEARL
Satin 9614137Q



SIGNAL RED
Gloss 98450735 Gloss 2654294G RC



POMMEL BLUE
Gloss 98451034



MISTLETOE
Gloss 98451040 Gloss 2656292G RC



ANODIC BRONZE
Satin 96119930



FLAME RED
Gloss 98419959



SPACE BLUE
Gloss 98419990



DARK VIOLET
Gloss 98451926

SURREAL® EFFECTS

MANNEX®



Distinctive and decorative course textured effect finishes delivered with tough polyester thermosetting powder. See product suitability tables for recommended usage.



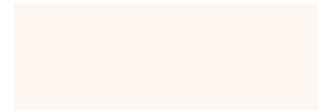
MANNEX® BLACK
90132679



MANNEX® SILVER LODGE PEARL
9017034Z



MANNEX® SUEDE
90137543



MANNEX® WHITE
90133641

SURREAL® EFFECTS

SCYLLA®



An open ripple effect with a sharp gloss finish delivered with tough polyester thermosetting powder. See product suitability tables for recommended usage.



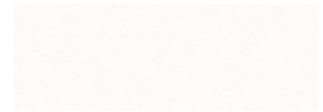
RED BROWN SCYLLA®
90185473



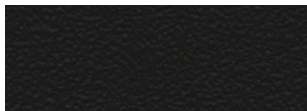
STONE BEIGE SCYLLA®
90185474



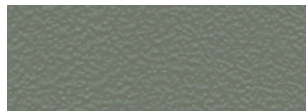
LIGHT GREY SCYLLA®
90150766



HORIZON WHITE SCYLLA®
90151608



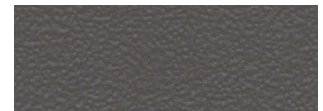
BLACK SCYLLA®
90150003



STORM GREY SCYLLA®
90150183



APO GREY SCYLLA®
90136612



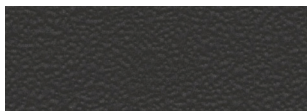
NOTRE DAME SCYLLA®
90150223

SURREAL® EFFECTS

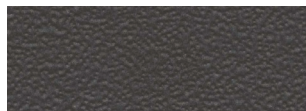
SAROUK®



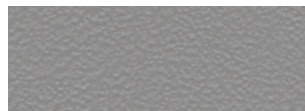
A range of matt ripple finishes designed for interior only applications delivered with polyester/epoxy thermosetting powder. See product suitability tables for recommended usage.



BLACK SAROUK®
93551146



GRAPHITE SAROUK®
93551677



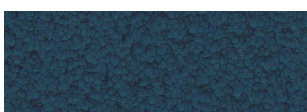
SILVER SAROUK®
93584874

SURREAL® EFFECTS

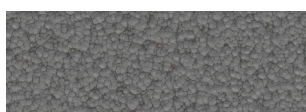
HAMMER®



A heavy undulating profile, with a coloured vein ripple delivered with tough polyester thermosetting powder. See product suitability tables for recommended usage.



BLUE HAMMER®
90185159



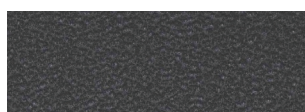
GREY HAMMER®
90185184

SURREAL® EFFECTS

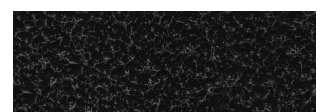
AZTEC®



A heavy undulating profile, with a pearl vein ripple delivered with tough polyester thermosetting powder. See product suitability tables for recommended usage.



AZTEC® BLACK
90182757



AZTEC® SILVER
90185040

Note: Whilst most of the Surreal Effect finishes are suitable for exterior durability, the external use of a profiled effect can lead to accumulation of dirt within the pattern which can reduce film performance, appearance or make cleaning and maintenance difficult.

Product Range

RANGE	COLOUR NAME	FINISH	LOOK	RAPID CURE	COLORBOND®	PRODUCT CODE	R	G	B	LRV
Alphatec	Anodic Bronze	Satin	Bright Solid			96119930	83	74	60	10%
Alphatec	Blaze Blue	Gloss	Bright Solid	RC		2655268G	0	106	178	16%
Alphatec	Blaze Blue	Gloss	Bright Solid			98419941	0	106	178	16%
Alphatec	Bright Silver Metallic	Gloss	Bright Solid			96151491	161	163	164	41%
Alphatec	Copper Pearl	Satin	Bright Solid			9614137Q	147	101	72	20%
Alphatec	Dark Violet	Gloss	Bright Solid			98451926	81	58	112	9%
Alphatec	Flame Red	Gloss	Bright Solid			98419959	152	41	44	11%
Alphatec	French Blue	Gloss	Bright Solid			98432725	46	83	161	13%
Alphatec	Lemon Yellow	Gloss	Bright Solid			98432120	241	214	80	70%
Alphatec	Mistletoe	Gloss	Bright Solid	RC		2656292G	13	105	56	14%
Alphatec	Mistletoe	Gloss	Bright Solid			98451040	13	105	56	14%
Alphatec	Orange X15	Gloss	Bright Solid	RC		2654293G	226	103	42	30%
Alphatec	Orange X15	Gloss	Bright Solid			98451439	226	103	42	30%
Alphatec	Pommel Blue	Gloss	Bright Solid			98451034	31	78	129	10%
Alphatec	Safety Yellow	Gloss	Bright Solid	RC		2652162G	241	161	33	48%
Alphatec	Safety Yellow	Gloss	Bright Solid			9842015G	241	161	33	48%
Alphatec	Signal Red	Gloss	Bright Solid	RC		2654294G	174	55	44	15%
Alphatec	Signal Red	Gloss	Bright Solid			98450735	174	55	44	15%
Alphatec	Space Blue	Gloss	Bright Solid			98419990	44	57	114	7%
Alphatec	Transformer Grey	Gloss	Bright Solid			98432186	125	138	133	29%
Alphatec	Yellow Gold	Gloss	Bright Solid	RC		2652188G	246	167	19	51%
Alphatec	Yellow Gold	Gloss	Bright Solid			98433617	246	167	19	51%
Duralloy	Anotec® Dark Grey	Matt	Solid	RC		2607538M	58	65	69	8%
Duralloy	Anotec® Dark Grey	Matt	Solid			27251275	58	65	69	8%
Duralloy	Anotec® Mid Bronze	Matt	Solid			27251014	66	57	51	7%
Duralloy	Anotec® Off White	Matt	Solid	RC		2602181M	225	218	199	73%
Duralloy	Anotec® Silver Grey	Matt	Solid			27251272	175	176	176	48%
Duralloy	APO Grey	Satin	Solid	RC		26032786	172	173	172	46%
Duralloy	APO Grey	Satin	Solid			27232786	172	173	172	46%
Duralloy	Barley	Gloss	Solid			2723089G	215	200	179	63%
Duralloy	Barrister White	Satin	Solid			27284672	235	225	206	78%
Duralloy	Basalt®	Matt	Solid	RC	CB	2607475M	91	93	93	15%
Duralloy	Basalt®	Satin	Solid	RC	CB	2607473S	91	93	93	15%
Duralloy	Berry Grey	Satin	Solid	RC		26088362	79	82	87	12%
Duralloy	Berry Grey	Gloss	Solid			2727262G	79	82	87	12%
Duralloy	Black	Gloss	Solid	RC		2609132G	45	46	46	5%
Duralloy	Black	Gloss	Solid			2729090G	45	46	46	5%
Duralloy	Black (C/B Night Sky®)	Matt	Solid	RC	CB	2609129M	42	43	43	4%
Duralloy	Black (C/B Night Sky®)	Satin	Solid	RC	CB	2609128S	42	43	43	4%
Duralloy	Black (C/B Night Sky®)	Matt	Solid		CB	27219319	42	43	43	4%
Duralloy	Black (C/B Night Sky®)	Satin	Solid		CB	27219268	42	43	43	4%
Duralloy	Blue Ridge®	Satin	Solid		CB	27288480	75	93	105	14%
Duralloy	Bright White	Gloss	Solid	RC		26084636	225	233	240	82%
Duralloy	Bright White	Gloss	Solid			27284636	225	233	240	82%
Duralloy	Canola Cream	Gloss	Solid			27281796	243	231	200	82%
Duralloy	Charcoal	Satin	Solid	RC		26088351	55	59	62	7%
Duralloy	Charcoal	Gloss	Solid			2729086G	55	59	62	7%
Duralloy	Charcoal	Satin	Solid			27288351	55	59	62	7%
Duralloy	Classic Cream®	Matt	Solid	RC	CB	26084732	227	210	176	69%
Duralloy	Classic Cream®	Satin	Solid	RC	CB	2602095S	227	210	176	69%
Duralloy	Classic Cream®	Satin	Solid		CB	2722095S	227	210	176	69%
Duralloy	Classic Hawthorn Green	Gloss	Solid			27233709	45	67	56	7%
Duralloy	Classic Pearl White	Gloss	Solid	RC		2601228G	242	245	241	91%
Duralloy	Classic Pearl White	Gloss	Solid			27281880	242	245	241	91%
Duralloy	Cottage Green®	Matt	Solid	RC	CB	2606304M	54	80	69	10%
Duralloy	Cottage Green®	Satin	Solid	RC	CB	26084219	54	80	69	10%
Duralloy	Cottage Green®	Satin	Solid		CB	27284219	54	80	69	10%
Duralloy	Cove®	Matt	Solid	RC	CB	2606252M	144	136	111	30%
Duralloy	Cove®	Satin	Solid	RC	CB	2606250S	144	136	111	30%
Duralloy	Deep Brunswick Green	Gloss	Solid	RC		2606134G	47	61	54	7%
Duralloy	Deep Brunswick Green	Gloss	Solid			2726134G	47	61	54	7%
Duralloy	Deep Ocean®	Matt	Solid	RC	CB	2605267M	61	73	84	9%
Duralloy	Deep Ocean®	Satin	Solid	RC	CB	2605125S	61	73	84	9%
Duralloy	Deep Ocean®	Satin	Solid		CB	2725125S	61	73	84	9%
Duralloy	Doeskin	Satin	Solid	RC		26032516	195	170	128	47%
Duralloy	Dune®	Matt	Solid	RC	CB	2607558M	170	163	152	42%
Duralloy	Dune®	Satin	Solid	RC	CB	2603087S	170	163	152	42%
Duralloy	Dune®	Satin	Solid		CB	2723087S	170	163	152	42%
Duralloy	Evening Haze®	Matt	Solid	RC	CB	2603168M	188	183	163	51%
Duralloy	Evening Haze®	Satin	Solid		CB	2723055S	188	183	163	51%
Duralloy	Grey Nurse	Gloss	Solid	RC		26050060	190	185	165	53%
Duralloy	Gully®	Matt	Solid	RC	CB	2608235M	117	111	100	20%
Duralloy	Gully®	Satin	Solid	RC	CB	2608233S	117	111	100	20%
Duralloy	Hammersley Brown	Satin	Solid	RC		26084657	72	60	57	8%
Duralloy	Ironstone®	Matt	Solid	RC	CB	2607556M	74	78	85	11%
Duralloy	Ironstone®	Satin	Solid	RC	CB	2607257S	74	78	85	11%
Duralloy	Ironstone®	Satin	Solid		CB	2727257S	74	78	85	11%
Duralloy	Jasper®	Matt	Solid	RC	CB	2608252M	103	92	81	15%
Duralloy	Jasper®	Satin	Solid	RC	CB	2608122S	103	92	81	15%
Duralloy	Jasper®	Satin	Solid		CB	2728122S	103	92	81	15%
Duralloy	Light Grey	Gloss	Solid			2727263G	197	190	173	56%
Duralloy	Magnolia	Gloss	Solid			27232658	219	206	178	66%
Duralloy	Mangrove®	Satin	Solid	RC	CB	2606262S	100	101	84	17%
Duralloy	Manor Red®	Matt	Solid	RC	CB	2604292M	105	56	50	9%
Duralloy	Manor Red®	Satin	Solid	RC	CB	2604134S	105	56	50	9%
Duralloy	Manor Red®	Satin	Solid		CB	2724134S	105	56	50	9%

RANGE	COLOUR NAME	FINISH	LOOK	RAPID CURE	COLORBOND®	PRODUCT CODE	R	G	B	LRV
Duralloy	Monument®	Matt	Solid	RC	CB	2609066M	66	67	67	9%
Duralloy	Monument®	Satin	Solid	RC	CB	2609067S	66	67	67	9%
Duralloy	Monument®	Satin	Solid		CB	2729067S	66	67	67	9%
Duralloy	Notre Dame	Gloss	Solid	RC		26036672	94	98	101	16%
Duralloy	Notre Dame	Gloss	Solid			27236672	94	98	101	16%
Duralloy	Off White	Satin	Solid	RC		2603149S	217	217	205	72%
Duralloy	Off White	Satin	Solid			27233732	217	217	205	72%
Duralloy	Olde Pewter	Satin	Solid	RC		26050243	106	109	112	19%
Duralloy	Olde Pewter	Satin	Solid			27250243	106	109	112	19%
Duralloy	Oyster	Matt	Solid	RC		26036858	190	192	185	56%
Duralloy	Oyster	Matt	Solid			27236858	190	192	185	56%
Duralloy	Pale Eucalypt®	Matt	Solid	RC	CB	2606303M	120	129	106	25%
Duralloy	Pale Eucalypt®	Satin	Solid	RC	CB	2606127S	120	129	106	25%
Duralloy	Paperbark®	Matt	Solid	RC	CB	2603174M	194	177	152	50%
Duralloy	Paperbark®	Satin	Solid	RC	CB	2603135S	194	177	152	50%
Duralloy	Paperbark®	Satin	Solid		CB	2723088S	194	177	152	50%
Duralloy	Pearl White	Gloss	Solid	RC		2601229G	239	243	242	90%
Duralloy	Pearl White	Gloss	Solid			2721114G	239	243	242	90%
Duralloy	Primrose	Gloss	Solid	RC		26084365	237	219	181	75%
Duralloy	Primrose	Gloss	Solid			27284365	237	219	181	75%
Duralloy	Rivergum Beige	Gloss	Solid			27236991	217	206	190	66%
Duralloy	Riversand®	Matt	Solid	RC	CB	2603193M	159	142	125	33%
Duralloy	Shale Grey®	Matt	Solid	RC	CB	2607557M	179	181	175	50%
Duralloy	Shale Grey®	Satin	Solid	RC	CB	26083246	179	181	175	50%
Duralloy	Shale Grey®	Satin	Solid		CB	27283246	179	181	175	50%
Duralloy	Shoji White	Satin	Solid	RC		26084682	226	221	212	76%
Duralloy	Shoji White	Satin	Solid			27284682	226	221	212	76%
Duralloy	Stone Beige	Matt	Solid	RC		26032538	194	170	141	47%
Duralloy	Stone Grey	Satin	Solid	RC		26078126	144	142	138	32%
Duralloy	Stone Grey	Satin	Solid			27278126	144	142	138	32%
Duralloy	Surfmist®	Matt	Solid	RC	CB	2603167M	213	213	205	69%
Duralloy	Surfmist®	Satin	Solid	RC	CB	2601137S	213	213	205	69%
Duralloy	Surfmist®	Satin	Solid		CB	2721137S	213	213	205	69%
Duralloy	Terrain®	Matt	Solid	RC	CB	2608234M	100	65	51	10%
Duralloy	Terrain®	Satin	Solid	RC	CB	2608232S	100	65	51	10%
Duralloy	Wallaby®	Matt	Solid	RC	CB	2607476M	109	107	103	19%
Duralloy	Wallaby®	Satin	Solid	RC	CB	2607474S	109	107	103	19%
Duralloy	Weathered Copper	Matt	Solid			27233724	81	73	63	10%
Duralloy	Wedgewood	Satin	Solid			27250279	90	121	144	23%
Duralloy	White	Satin	Solid	RC		2601139S	243	245	241	92%
Duralloy	White	Satin	Solid			2721139S	243	245	241	92%
Duralloy	White Birch	Gloss	Solid	RC		2602057G	249	236	214	87%
Duralloy	White Birch	Gloss	Solid			27237131	245	236	216	86%
Duralloy	Wilderness®	Satin	Solid		CB	27284224	98	112	98	19%
Duralloy	Windspray®	Matt	Solid	RC	CB	2607559M	126	132	129	27%
Duralloy	Windspray®	Satin	Solid	RC	CB	2607256S	126	132	129	27%
Duralloy	Windspray®	Satin	Solid		CB	2727256S	126	132	129	27%
Duralloy	Woodland Grey®	Matt	Solid	RC	CB	2606256M	82	82	77	12%
Duralloy	Woodland Grey®	Satin	Solid	RC	CB	2606255S	82	82	77	12%
Duralloy	Woodland Grey®	Satin	Solid		CB	2727255S	82	82	77	12%
Precious	Bronze Pearl	Satin	Pearlescent			97194686	73	63	51	8%
Precious	Champagne Kinetic® Pearl	Matt	Pearlescent			9713059K	140	132	120	28%
Precious	Charcoal Metallic Pearl	Gloss	Pearlescent			97118796	64	64	65	8%
Precious	Citi Pearl	Matt	Pearlescent			97188471	166	171	174	45%
Precious	Copper Kinetic® Pearl	Satin	Pearlescent			9717183K	136	128	117	27%
Precious	Essential Silver Pearl	Matt	Pearlescent	RC		2603146Q	161	162	158	41%
Precious	Gunmetal Kinetic® Pearl	Satin	Pearlescent			9718115K	86	85	81	13%
Precious	Metropolis® Bronze Pearl	Satin	Pearlescent			97159003	74	71	69	10%
Precious	Metropolis® Silver Glow Pearl	Gloss	Pearlescent			97184623	165	171	174	45%
Precious	Mother Of Pearl	Gloss	Pearlescent			97184678	228	223	214	77%
Precious	Natural Pearl	Matt	Pearlescent			97189119	161	162	158	41%
Precious	Nickel Pearl	Matt	Pearlescent			97188360	169	160	146	40%
Precious	Onyx Pearl	Gloss	Pearlescent			97152052	61	62	64	8%
Precious	Pewter Pearl	Satin	Pearlescent			97188202	121	125	125	25%
Precious	Platypus Kinetic® Pearl	Satin	Pearlescent			9717214K	161	158	152	39%
Precious	Sharp Silver Kinetic® Pearl	Satin	Pearlescent			9717238K	159	162	162	41%
Precious	Silver Kinetic® Pearl	Satin	Pearlescent			9717043K	150	154	153	37%
Precious	St Elmos Fire Kinetic® Pearl	Satin	Pearlescent			9717208K	144	146	147	33%
Precious	Steel Pearl	Satin	Pearlescent			97157127	87	92	93	14%
Precious	Typhoon Pearl	Satin	Pearlescent	RC		2607469Q	89	90	87	14%
Surreal Effects Aztec	Aztec Black	Effect	Pearl Vein Ripple			90182757	82	86	89	13%
Surreal Effects Aztec	Aztec Silver	Effect	Pearl Vein Ripple			90185040	77	81	83	11%
Surreal Effects Hammer	Blue Hammer	Effect	Colour Vein Ripple			90185159	41	74	98	9%
Surreal Effects Hammer	Grey Hammer	Effect	Colour Vein Ripple			90185184	110	113	115	21%
Surreal Effects Mannex	Mannex Black	Effect	Textured			90132679	45	46	47	5%
Surreal Effects Mannex	Mannex Silver Lode Pearl	Effect	Textured			9017034Z	156	158	154	39%
Surreal Effects Mannex	Mannex Suede	Effect	Textured			90137543	196	191	181	57%
Surreal Effects Mannex	Mannex White	Effect	Textured			90133641	240	242	237	90%
Surreal Effects Sarouk	Black Sarouk	Effect	Matt Ripple			93551146	50	51	52	5%
Surreal Effects Sarouk	Graphite Sarouk	Effect	Matt Ripple			93551677	84	84	84	12%
Surreal Effects Sarouk	Silver Sarouk	Effect	Matt Ripple			93584874	144	145	144	33%
Surreal Effects Scylla	APO Grey Scylla	Effect	Ripple			90136612	172	173	172	46%
Surreal Effects Scylla	Black Scylla	Effect	Ripple			90150003	48	48	49	5%
Surreal Effects Scylla	Horizon White Scylla	Effect	Ripple			90151608	239	238	229	86%
Surreal Effects Scylla	Light Grey Scylla	Effect	Ripple			90150766	193	186	165	53%
Surreal Effects Scylla	Notre Dame Scylla	Effect	Ripple			90150223	92	96	99	15%
Surreal Effects Scylla	Red Brown Scylla	Effect	Ripple			90185473	73	61	59	8%
Surreal Effects Scylla	Stone Beige Scylla	Effect	Ripple			90185474	197	178	155	50%
Surreal Effects Scylla	Storm Grey Scylla	Effect	Ripple			90150183	124	137	131	28%

Worth doing, worth Dulux.®

Meeting Project Needs

The following tables can be used to help identify your project and environment needs, and ultimately the product choice you have from this card.

Product Suitability – Aluminum

Project Type	Environment	Conditions	Duralloy ²	Precious ²	Alphatec	Surreal Effects Mannex	Surreal Effects Sarouk ¹	Surreal Effects Scylla	Surreal Effects Hammer	Surreal Effects Aztec
Residential (<4 Levels)	Exterior	Mild	●	●						
Non-Habitable	Exterior	Mild	●	●	○	○	○	○	○	○
All Projects	Interior	General Interior	●	●	○	○	○	○	○	○

● Alumi Shield Warranty. ○ Non-warrantable. 1. Surreal Effects Sarouk is interior only.

2. Duralloy and Precious are only suitable for coastal environments >100m from the high tide line and are NOT suitable in strongly acidic environments so PH must be >5.

- Non-Habitable projects are those that are not dwelling types. Examples can be furniture, bus shelters, statues, signage etc.
- Residential properties (BCA Class 1 & 10) are typically easy to maintain, given their height and access.
- All projects can include monumental, prestigious commercial, commercial and residential of all types (levels).

Product Suitability – Steel

		Corrosion Category		Primer System	Top Coat Choice							
AS4312 & ISO 12944	Description of Environment	Mild Steel Corrosion Rate (Microns Per Year) ¹	Example Environment	Zinc-shield	Duralloy ³	Precious ³	Alphatec	Surreal Effects Mannex	Surreal Effects Sarouk ²	Surreal Effects Scylla	Surreal Effects Hammer	Surreal Effects Aztec
C1	Very Low	<1.3	Interior: Dry indoors	●	●	●	○	○	○	○	○	○
C2	Low	1.3-25	Exterior: Arid, urban, inland Interior: Minor condensation	●	●	●	○	○	○	○	○	○
C3	Medium	25-50	Exterior: Coastal or industrial Interior: High moisture	●	●	●	○	○	○	○	○	○

● Steel Shield Warranty. ○ Non-warrantable. 1. Corrosion rate is for uncoated steel. 2. Surreal Effects Sarouk is interior only.

3. Duralloy and Precious are only suitable for coastal environments >100m from the high tide line and are NOT suitable in strongly acidic environments so PH must be >5.

- Substrates include Mild Steel, Bright/Semi Bright Steel, Black Steel and Blue Steel.
- Please refer to a Dulux Duspec Specification for exact specification details.

For more information visit duluxpowders.com.au/specifications

Warranted Performance

All Dulux Duralloy and Precious powder coat products are backed by product specific warranties.

	Warranty	Duralloy	Precious
Alumi Shield Warranty	Aluminium Durability	10 Years	10 Years
	Aluminium Colour	10 Years	10 Years
Steel Shield Warranty	Steel Corrosion	Up to 10 Years	Up to 10 Years
	Steel Colour	10 Years	10 Years

Warranties are made up of a colour warranty (for colour fade and chalking), durability warranty (film integrity for aluminium only), and corrosion warranty (for steel only). They are only valid when applied by a Dulux Accredited Powder Coater to the warranty specification on recommended project types and conditions.

For more information visit duluxpowders.com.au/warranties

Dulux Accredited Powder Coaters

Only Dulux Accredited Powder Coaters are able to issue our Dulux Alumi Shield and Steel Shield warranties after demonstrating their capability to meet stringent quality conditions and international standards.



For more information visit duluxpowders.com.au/accredited

Custom Colour

This colour card and our Premium Colour Selector offer a range of products and colours that are readily available. If you cannot find the colour you require in a particular product, Dulux offer a Custom colour service. Call 13 24 99 or visit duluxpowders.com.au

Advice Line

Our dedicated consultants can help simplify the specification process, saving you time and money by providing the right coating advice for your project. Call 13 24 99 or visit duluxpowders.com.au

Offices

Australia

Dulux Powder & Industrial Coatings
1-15 Pound Road West, Dandenong South VIC 3175
T (61) 3 8787 4500 F (61) 3 8787 4542

New Zealand

Dulux Powder & Industrial Coatings
31B Hillside Road, Glenfield, Auckland, New Zealand
T (64) 9 441 8244 F (64) 9 441 8242

Singapore

DGL International Powder & Industrial Coatings
BLK 265, #02-275, Serangoon Central Drive
T (65) 68381010 F (65) 6733 5125








China

DGL Camel Powder Coatings
No.11 Changtang Road, Yantian District
Fenggang, Dongguan, Guangdong, China, PC 523701
T (86) 769 8680 1088 F (86) 769 8680 1092/8756 9339

Dulux, Duralloy, Precious, Alphatec, Anotec, Surreal Effects, Worth doing, worth Dulux and Dulux World of Colour are registered trade marks and Custom Colour, Rapidcure, Alumi Shield, Steel Shield and Dulux Accredited Powder Coaters are trade marks of DuluxGroup (Australia) Pty Ltd. Colorbond Steel and the Colorbond Steel colour names denoted by the ® symbol are registered trade marks of Bluescope Steel Ltd. Product colours displayed in this guide are indicative only. They have been matched to indoor viewing and are as close to the actual product colours as modern printing techniques allow. Colour appearance may vary according to light source. Always confirm your colour choice with production line prepared samples for final colour approval. Over time the durability performance between Colorbond Steel and Dulux Powder Coating products may vary. Copyright 2017 DuluxGroup (Australia) Pty Ltd.

Premium Colour Selector

The Premium Colour Selector contains products that are for use on interior and exterior applications. It includes warrantable products up to 30 years durability.

	 NON-HABITABLE	 RESIDENTIAL ←4 LEVELS	 RESIDENTIAL →3 LEVELS	 COMMERCIAL ←4 LEVELS	 COMMERCIAL →3 LEVELS	 PRESTIGIOUS COMMERCIAL	 MONUMENTAL
INTERIOR	•	•	•	•	•	•	•
EXTERIOR	•	•	•	•	•	•	•

Dulux World of Colour®
Powder Coat Series
Australian Collection



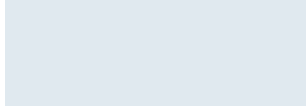
Dulux Powder Coat Premium Colour Selector

DURATEC[®]
ZEUS[®]

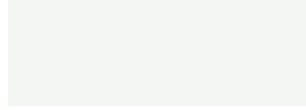


✓ AS 3715
✓ AAMA 2603
✓ AAMA 2604

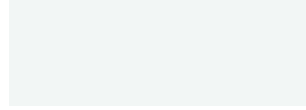
Subtle and neutral solid colours delivered with warranty grade* advanced super durable polyester thermosetting powder. See product suitability tables for recommended usage.



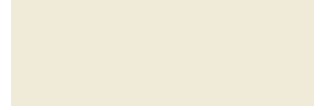
ZEUS ARCTIC WHITE
Satin 90058851



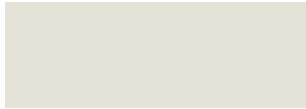
ZEUS APPLIANCE WHITE
Satin 90058853



ZEUS WHITE
Gloss 9001110G



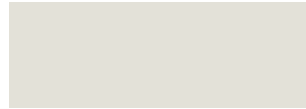
ZEUS CHALK USA
Gloss 90073713



ZEUS TALC
Satin 90084682



ZEUS MATT CANVAS CLOTH
Matt 9007327M



ZEUS LUNAR GREY
Matt 90088417



ZEUS SILVER GREY
Gloss 90051272



ZEUS GREY
Satin 90088416



ZEUS TIMBERLAND
Satin 9007315S



ZEUS CHARCOAL
Satin 90087732



ZEUS DARK GREY
Matt 90051275



ZEUS MONUMENT[®]
Satin 9007307S



ZEUS MONUMENT[®]
Matt 9008189M



ZEUS BLACK
Matt 90088702



ZEUS LUNAR ECLIPSE
Satin 90087734

DURATEC® ETERNITY®



Beautiful decorative pearlescent colours delivered with warranty grade* advanced super durable polyester thermosetting powder. See product suitability tables for recommended usage.



ETERNITY LINEN PEARL
Satin 9001138Q



ETERNITY NICKEL PEARL
Matt 90088395



ETERNITY COPPER METALLIC KINETIC
Matt 9007183K



ETERNITY MATT CHAMPAGNE KINETIC
Matt 9003059K



ETERNITY CITI SILVER PEARL
Matt 9007024Q



ETERNITY CHAIN PEARL
Matt 90089119



ETERNITY STAR PEARL
Flat 9007005F



ETERNITY SILVER KINETIC PEARL
Satin 9007160K



ETERNITY PEWTER PEARL
Satin 90088396



ETERNITY TITANIUM PEARL
Satin 90087728



ETERNITY BRONZE PEARL
Satin 90088393



ETERNITY CHARCOAL PEARL
Satin 90088394

DURATEC® INTENSITY®



Fun, bright solid colours for a big impact delivered with warranty grade* advanced super durable polyester thermosetting powder. See product suitability tables for recommended usage.



INTENSITY LEAF
Satin 9006167S



INTENSITY EVERGREEN
Satin 9006005S



INTENSITY COAST
Satin 9005233S



INTENSITY REEF
Gloss 9005011G



INTENSITY SUMMER
Gloss 9004008G



INTENSITY FLAME
Gloss 9004007G



INTENSITY DESERT
Satin 9004227S



INTENSITY STORM
Satin 90089584



INTENSITY SUNSHINE
Gloss 9002084G



INTENSITY MOONLIGHT
Satin 9002004S

* All Dulux Duratec products are supported by Dulux Alumi Shield and Dulux Steel Shield warranties when applied by a Dulux Accredited Powder Coater to the warranty specification on recommended project types and conditions. For more information visit duluxpowders.com.au/warranties

ELECTRO[®]

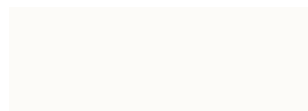
POWDERCOAT RANGE



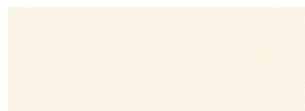
- ✓ AS 3715
- ✓ AAMA 2603
- ✓ AAMA 2604

A unique anodised look, designed to subtly change in appearance as light conditions alter in the day delivered with warranty grade* advanced super durable polyester thermosetting powder. See product suitability tables for recommended usage.

MODERN



FLAT WHITE
Flat 9061200F



CLEAN LINEN
Flat 9061302K



VENERABLE SILVER
Flat 9067621K



CANARY
Flat 9062209K



BRIGHT SPARK
Flat 9062205K



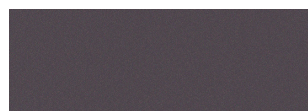
FRED
Flat 9064164K



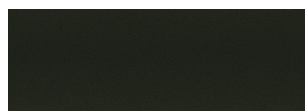
TIBERIUS
Flat 9062210K



BLUE GOLD
Flat 9065301K



POYPLE
Flat 9065304K



GREEN LANTERN
Flat 9066342K



BLUE NIGHT
Flat 9065303K



BLUEIT
Flat 9065302K



BRILLIANCE
Flat 9068281K



MONUMENT[®]
Flat 9069171F CB

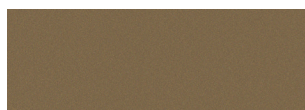


BURNISHED COPPER
Flat 9068185K

TRADITIONAL



SILVER REIGN
Flat 9067614K



SENSATIONAL CHAMPAGNE
Flat 9063187K



FRESH GOLD
Flat 9062208K



MEDIUM BRONZE
Flat 9068183K



BASALT
Flat 9067645F CB



DARK BRONZE
Flat 9068184K



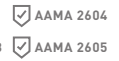
BLACK ACE
Flat 9069116F

CB Colorbond[®] and the Colorbond colour names are registered trademarks of Bluescope Steel Limited.

* All Dulux Electro products are supported by Dulux Alumi Shield and Dulux Steel Shield warranties when applied by a Dulux Accredited Powder Coater to the warranty specification on recommended project types and conditions. For more information visit duluxpowders.com.au/warranties

FLUOROSSET[®]

POWDERCOAT RANGE



Subtle and neutral solid colours delivered with warranty grade* advanced ultra durable fluoropolymer thermosetting powder. See product suitability tables for recommended usage.

ULTRA DURABLE



XTREME™ WHITE
Satin 9641157M



XTREME™ COIN
Satin 9647289S



XTREME™ CHAMPAGNE
Satin 9647302Q



XTREME™ SILVER
Satin 9647273Q



XTREME™ CHARCOAL
Satin 9647297M



XTREME™ BLACK
Satin 96456970

* All Dulux Fluoroset products are supported Dulux Alumi Shield and Dulux Steel Shield warranties when applied by a Dulux Accredited Powder Coater to the warranty specification on recommended project types and conditions. For more information visit duluxpowders.com.au/warranties

Premium Product Range

RANGE	COLOUR NAME	FINISH	LOOK	COLORBOND®	PRODUCT CODE	R	G	B	LRV
Duratec Eternity	Eternity Bronze Pearl	Satin	Pearlescent		90088393	82	74	62	10%
Duratec Eternity	Eternity Chain Pearl	Matt	Pearlescent		90089119	168	171	168	45%
Duratec Eternity	Eternity Charcoal Pearl	Satin	Pearlescent		90088394	55	54	55	6%
Duratec Eternity	Eternity Citi Silver Pearl	Matt	Pearlescent		9007024Q	172	176	179	48%
Duratec Eternity	Eternity Copper Metallic Kinetic	Matt	Pearlescent		9007183K	146	134	124	29%
Duratec Eternity	Eternity Linen Pearl	Satin	Pearlescent		9001138Q	222	219	207	73%
Duratec Eternity	Eternity Matt Champagne Kinetic	Matt	Pearlescent		9003059K	157	151	142	36%
Duratec Eternity	Eternity Nickel Pearl	Matt	Pearlescent		90088395	165	158	146	39%
Duratec Eternity	Eternity Pewter Pearl	Satin	Pearlescent		90088396	124	129	129	26%
Duratec Eternity	Eternity Silver Kinetic Pearl	Satin	Pearlescent		9007160K	151	154	156	37%
Duratec Eternity	Eternity Star Pearl	Flat	Pearlescent		9007005F	156	159	159	39%
Duratec Eternity	Eternity Titanium Pearl	Satin	Pearlescent		90087728	89	91	88	14%
Duratec Intensity	Intensity Coast	Satin	Bright Solid		9005233S	13	94	134	13%
Duratec Intensity	Intensity Desert	Satin	Bright Solid		9004227S	139	57	46	12%
Duratec Intensity	Intensity Evergreen	Satin	Bright Solid		9006005S	38	96	62	12%
Duratec Intensity	Intensity Flame	Gloss	Bright Solid		9004007G	180	44	41	14%
Duratec Intensity	Intensity Leaf	Satin	Bright Solid		9006167S	75	137	65	24%
Duratec Intensity	Intensity Moonlight	Satin	Bright Solid		9002004S	238	207	65	66%
Duratec Intensity	Intensity Reef	Gloss	Bright Solid		9005011G	39	105	184	18%
Duratec Intensity	Intensity Storm	Satin	Bright Solid		90089584	42	51	79	6%
Duratec Intensity	Intensity Summer	Gloss	Bright Solid		9004008G	230	90	35	28%
Duratec Intensity	Intensity Sunshine	Gloss	Bright Solid		9002084G	231	171	54	50%
Duratec Zeus	Zeus Appliance White	Satin	Solid		90058853	240	244	239	91%
Duratec Zeus	Zeus Arctic White	Satin	Solid		90058851	224	232	237	82%
Duratec Zeus	Zeus Black	Matt	Solid		90088702	44	44	45	5%
Duratec Zeus	Zeus Chalk USA	Gloss	Solid		90073713	239	234	217	84%
Duratec Zeus	Zeus Charcoal	Satin	Solid		90087732	60	63	67	8%
Duratec Zeus	Zeus Dark Grey	Matt	Solid		90051275	59	64	68	8%
Duratec Zeus	Zeus Grey	Satin	Solid		90088416	108	111	114	20%
Duratec Zeus	Zeus Lunar Eclipse	Satin	Solid		90087734	45	45	46	5%
Duratec Zeus	Zeus Lunar Grey	Matt	Solid		90088417	227	225	216	77%
Duratec Zeus	Zeus Matt Canvas Cloth	Matt	Solid		9007327M	203	200	189	61%
Duratec Zeus	Zeus Monument®	Satin	Solid	CB	9007307S	66	67	67	9%
Duratec Zeus	Zeus Monument®	Matt	Solid	CB	9008189M	66	67	67	9%
Duratec Zeus	Zeus Silver Grey	Matt	Solid		90051272	171	175	177	47%
Duratec Zeus	Zeus Talc	Satin	Solid		90084682	229	226	216	78%
Duratec Zeus	Zeus Timberland	Satin	Solid		9007315S	84	84	80	12%
Duratec Zeus	Zeus White	Gloss	Solid		9001110G	240	244	242	90%
Electro	Basalt®	Flat	Anodised	CB	9067645F	91	93	93	15%
Electro	Black Ace	Flat	Anodised		9069116F	59	60	60	4%
Electro	Blue Gold	Flat	Anodised		9065301K	111	128	122	20%
Electro	Blue Night	Flat	Anodised		9065303K	67	68	71	6%
Electro	Blueit	Flat	Anodised		9065302K	40	117	146	15%
Electro	Bright Spark	Flat	Anodised		9062205K	226	165	62	43%
Electro	Brilliance	Flat	Anodised		9068281K	112	102	90	14%
Electro	Burnished Copper	Flat	Anodised		9068185K	93	75	71	8%
Electro	Canary	Flat	Anodised		9062209K	234	188	69	54%
Electro	Clean Linen	Flat	Anodised		9061302K	219	219	212	70%
Electro	Dark Bronze	Flat	Anodised		9068184K	77	69	63	6%
Electro	Flat White	Flat	Anodised		9061200F	236	240	237	86%
Electro	FRed	Flat	Anodised		9064164K	178	66	66	14%
Electro	Fresh Gold	Flat	Anodised		9062208K	150	131	107	24%
Electro	Green Lantern	Flat	Anodised		9066342K	76	81	72	8%
Electro	Medium Bronze	Flat	Anodised		9068183K	103	93	80	11%
Electro	Monument®	Flat	Anodised	CB	9069171F	66	67	67	9%
Electro	Poypole	Flat	Anodised		9065304K	114	105	109	15%
Electro	Sensational Champagne	Flat	Anodised		9063187K	148	138	125	26%
Electro	Silver Reign	Flat	Anodised		9067614K	170	175	173	42%
Electro	Tiberius	Flat	Anodised		9062210K	109	94	65	12%
Electro	Venerable Silver	Flat	Anodised		9067621K	125	127	128	21%
Fluoroset	Xtreme™ Black	Satin	Solid		96456970	42	42	43	4%
Fluoroset	Xtreme™ Champagne	Satin	Solid		9647302Q	161	158	153	39%
Fluoroset	Xtreme™ Charcoal	Satin	Solid		9647297M	58	61	64	7%
Fluoroset	Xtreme™ Coin	Satin	Solid		9647289S	163	167	169	43%
Fluoroset	Xtreme™ Silver	Satin	Solid		9647273Q	145	149	151	35%
Fluoroset	Xtreme™ White	Satin	Solid		9641157M	231	232	223	82%

Worth doing, worth Dulux.®

Whatever your project needs, Dulux powder coatings provide you with the confidence and quality that will make it all worthwhile.

Meeting Industry Standards

Dulux Premium Powder Coat Products are designed to meet both the global AAMA and Australian AS3715 standard architectural standards.

	Fluoraset	Electro	Duratec
AAMA 2605	●		
AAMA 2604	●	●	●
AAMA 2603	●	●	●
Coating Type	Ultra Durable Fluoropolymer	Super Durable Polyester	Super Durable Polyester

Meeting Project Needs

The following tables can be used to help identify your project and environment needs, and ultimately the product choice you have from this card.

Product Suitability – Aluminum

Project Type	Environment	Conditions	Fluoraset ¹	Electro ²	Duratec ²
Monumental	Exterior	Mild, Severe or Tropical	●		
Prestigious Commercial	Exterior	Severe or Tropical	●		
Prestigious Commercial	Exterior	Mild	●	●	●
Commercial Developments	Exterior	Mild, Severe or Tropical	●	●	●
Residential	Exterior	Mild, Severe or Tropical	●	●	●
Non-Habitable	Exterior	Mild, Severe or Tropical	●	●	●
All Projects	Interior	Moderate Interior	●	●	●
All Projects	Interior	General Interior	●	●	●

● Alumi Shield Warranty.

1. Fluoraset may be suitable in locations <10m from the high tide line e.g. harbours (contact Dulux for advice) and is NOT suitable in strongly acidic environments so PH must be >5.

2. Electro and Duratec are only suitable for coastal environments >10m from the high tide and are NOT suitable in strongly acidic environments so PH must be >5.

- Non-Habitable projects are those that are not dwelling types. Examples can be furniture, bus shelters, signage etc.
- Residential properties are typically easy to maintain, given their height and access.
- High-rise projects are less sheltered from neighbouring buildings, raising their exposure and reducing their ease of maintenance.
- Monumental projects attract the most attention and have the highest standards required to uphold the reputation expected from landmark sites.

Product Suitability – Steel

The appropriate coating system on steel is largely driven by the corrosive environment of the coated item. This can be determined in accordance with AS4312 Atmospheric corrosivity zones in Australia.

AS4312 & ISO 12944	Corrosion Category			Primer System		Top Coat Choice		
	Description of Environment	Mild Steel Corrosion Rate (Microns Per Year) ¹	Example Environment	Zincshield	E-Prime	Fluoraset ²	Electro ³	Duratec ³
C1	Very Low	<1.3	Interior: Dry indoors	●		●	●	●
C2	Low	1.3–25	Exterior: Arid, urban, inland Interior: Minor condensation	●		●	●	●
C3	Medium	25–50	Exterior: City, coastal or industrial Interior: High moisture	●		●	●	●
C4	High	50–80	Exterior: Sea shore (calm) Interior: Significant contamination	●	●	● ²	● ³	● ³
C5	Very High Industrial	80–200	Exterior: Heavy industrial	●	●	● ²	● ³	● ³
C5	Very High Marine	80–200	Exterior: Sea-shore (surf)	●	●	● ²	● ³	● ³

● Steel Shield Warranty. 1. Corrosion rate is for uncoated steel.

2. Fluoraset may be suitable in locations <10m from the high tide line e.g. harbours (contact Dulux for advice) and is NOT suitable in strongly acidic environments so PH must be >5.

3. Electro and Duratec are only suitable for coastal environments >10m from the high tide and are NOT suitable in strongly acidic environments so PH must be >5.

- Substrates include Mild Steel, Bright/Semi Bright Steel, Black Steel and Blue Steel.
- Please refer to a Dulux Duspec Specification for exact specification details.
- Abrasive blast clean all steel surfaces to be painted in accordance with AS1627.4 to visual standard AS1627.9 Class 2.5 (equivalent to ISO8501-1, Sa 2.5: Very Thorough Blast-Cleaning). Use a non-metallic medium that will generate a surface profile of 35 to 65 microns (as tested to AS3894.5 Method A).
- Items to be coated must be planned and designed in accordance with AS/NZS 2312 Section 3.

Visit duluxpowders.com.au/specifications for a comprehensive overview and specific specification details on aluminium and steel or call our advice line.

Warranted Performance

All Dulux premium powder coat products are backed by product specific warranties. Below is an overview of the warranties available from Dulux:

	Warranty	Flourosset	Electro	Duratec
Alumi Shield Warranty	Aluminium Durability	30 Years	20 Years	20 Years
	Aluminium Colour	25 Years	15 Years	15 Years*
Steel Shield Warranty	Steel corrosion	Up to 10 Years	Up to 10 Years	Up to 10 Years
	Steel Colour	25 Years	15 Years	15 Years*

* Excluding Intensity – 10 Years.

Warranties are made up of a colour warranty (for colour fade and chalking), durability warranty (film integrity for aluminium only), and corrosion warranty (for steel only). They are only valid when applied by a Dulux Accredited Powder Coater to the warranty specification on recommended project types and conditions.

For more information visit duluxpowders.com.au/warranties

Dulux Accredited Powder Coaters

Only Dulux Accredited Powder Coaters are able to issue our Dulux Alumi Shield and Steel Shield warranties after demonstrating their capability to meet stringent quality conditions and international standards.



For more information visit duluxpowders.com.au/accredited

Custom Colour

This colour card and our Colour Selector offer a range of products and colours that are readily available. If you cannot find the colour you require in a particular product, Dulux offer a Custom colour service. Call 13 24 99 or visit duluxpowders.com.au

Advice Line

Our dedicated consultants can help simplify the specification process, saving you time and money by providing the right coating advice for your project. Call 13 24 99 or visit duluxpowders.com.au

Offices

Australia

Dulux Powder & Industrial Coatings
1-15 Pound Road West , Dandenong South VIC 3175
T (61) 3 8787 4500 F (61) 3 8787 4542

New Zealand

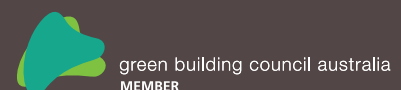
Dulux Powder & Industrial Coatings
31B Hillside Road, Glenfield, Auckland, New Zealand
T (64) 9 441 8244 F (64) 9 441 8242

Singapore

DGL International Powder & Industrial Coatings
BLK 265, #02-275, Serangoon Central Drive
T (65) 68381010 F (65) 6733 5125

China

DGL Camel Powder Coatings
No.11 Changtang Road, Yantian District
Fenggang, Dongguan, Guandong, China, PC 523701
T (86) 769 8680 1088 F (86) 769 8680 1092/8756 9339



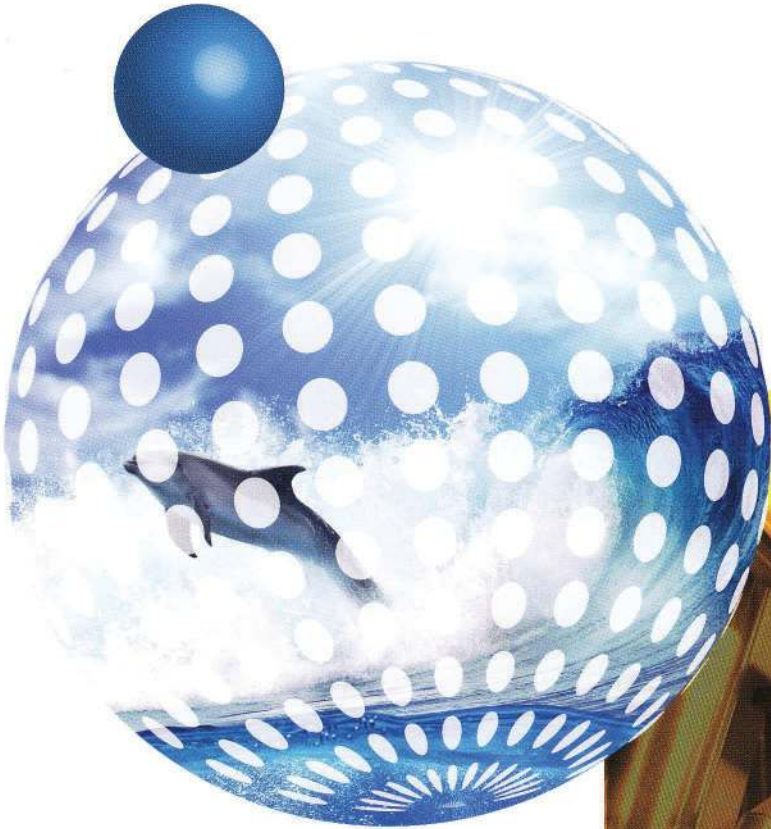
Dulux, Duratec, Electro, Fluoraset, Worth doing, worth Dulux and Dulux World of Colour are registered trade marks and Custom Colour, Alumi Shield, Steel Shield, Dulux Accredited Powder Coaters are trade marks of DuluxGroup (Australia) Pty Ltd. Colorbond Steel and the Colorbond Steel colour names denoted by the ® symbol are registered trade marks of Bluescope Steel Ltd. Product colours displayed in this guide are indicative only. They have been matched to indoor viewing and are as close to the actual product colours as modern printing techniques allow. Colour appearance may vary according to light source. Always confirm your colour choice with production line prepared samples for final colour approval. Over time the durability performance between Colorbond Steel and Dulux Powder Coating products may vary. Copyright 2017 DuluxGroup (Australia) Pty Ltd.



Dulux[®]
POWDER & INDUSTRIAL COATINGS

PACIFIC GOLD[®]

Powder Coating colours
for decor & industry



INCLUDING AN INTRODUCTION TO THE DULUX[®] ARCHITECTURAL RANGE

PACIFIC GOLD[®]

Powder Coating colours for decor & industry

YELLOW & ORANGE



2004S HAPPY



2140S CARTERTON



59623 SCHWEPPES YELLOW



33617 YELLOW GOLD



2141S HOUHORA



51439 ORANGE X15



4008G TINGLE GLOSS

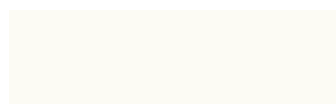
WHITE



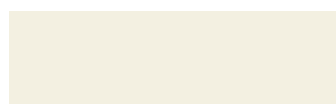
58861 ARCTIC WHITE



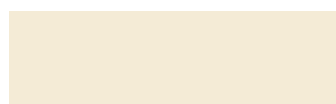
96914 AG ARCTIC WHITE



97434 PEARL WHITE



58864 CHALK USA



2139G SANDSPIT



58728 SILVER QUILL



7381G GLINKS GULLY

BLUE



58613 SKY



5186S HURSTMERE ROAD



57273 ROYAL BLUE



19990 SPACE BLUE



57262 POMMEL BLUE



58610 DULUX[®] BLUE



51926 DARK VIOLET

PACIFIC GOLD[®]

Powder Coating colours for decor & industry

RED



4056G TICKLE PINK



4155G FLAME RED



58413 BRIGHT RED



50735 SIGNAL RED



56995 COLA RED



4185S THREE KINGS



57074 WINEBERRY

GREY & PEARL



32786 APO GREY



97488 GREYWACKE



7380K SILVER 2K KINETIC[®]



7182K NZ BRIGHT SILVER KINETIC[®]



7134K NATURAL STEEL KINETIC[®]



57127 ANTIQUE STEEL



58653 HIGH GLOSS BLACK

GREEN



58571 MISTLETOE



6006S MAMBA GREEN



7382S PENCARROW



6205S MANFIELD



6204S SHOTOVER STREET



57290 HAWTHORN GREEN

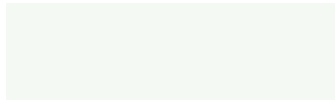


81879 DEEP BRUNSWICK GREEN

Colour specifications

POWDER & INDUSTRIAL COATINGS

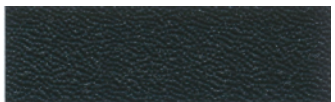
SURREAL FX



33641 MANNEX WHITE



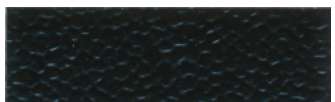
57289 CREAM RIPPLE



57124 BLACK WATERED SILK



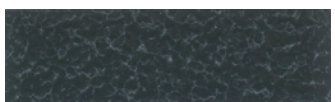
57242 BLACK SAND TEXTURE



57243 SATIN BLACK RIPPLE



51677 GRAPHITE RIPPLE



85180 BLACK HAMMERTONE

YELLOW & ORANGE

WHITE

BLUE

RED

GREY & PEARL

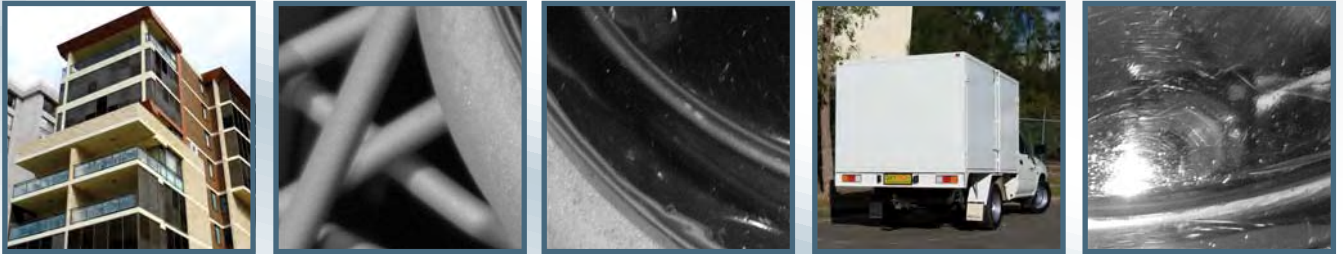
GREEN

SURREAL FX

Line#	Gloss Level	UV Index	RGB	Light Reflectancy		
2004S	Happy	288	S	3	250,213,62	71
2140S	Carterton	288	S	3	249,212,100	70
59623	Schweppes Yellow	288	G	2	255,200,9	68
33617	Yellow Gold	288	G	2	249,169,30	52
2141S	Houhora	288	S	3	200,155,89	40
51439	Orange X15	288	G	2	235,107,52	32
4008G	Tingle Gloss	288	G	3	240,89,28	29
4068G	Lucent Orange	288	G	1	208,86,36	23
58861	Arctic White	288	G	3	235,241,248	89
96914	AG Arctic White	910	G	3	237, 242, 248	89
97434	Pearl White	288	G	3	251,249,240	95
58864	Chalk USA	288	G	3	242,239,224	87
2139G	Sandspit	288	G	3	243,234,214	83
58728	Silver Quill	288	G	3	204,205,201	64
7381G	Glinks Gully	288	G	3	214,206,191	65
2045G	Lucent Yellow	288	G	1	197,189,59	53
58613	Sky	288	G	3	0,124,174	17
5186S	Hurstmere Road	288	S	3	41,88,154	14
57273	Royal Blue	288	G	3	43,59,105	7
19990	Space Blue	288	G	3	46,57,115	7
57262	Pommel Blue	288	G	3	45,94,134	10
58610	Dulux® Blue	288	S	3	49,58,80	7
51926	Dark Violet	288	G	3	85,60,113	9
5072G	Lucent Sapphire	288	G	1	0,90,163	12
4056G	Tickle Pink	288	G	2	203,67,106	21
4155G	Flame Red	288	G	2	166,58,60	12
58413	Bright Red	288	G	2	167,50,49	13
50735	Signal Red	288	G	2	178,56,44	15
56995	Cola Red	915	S	3	202,49,54	18
4185S	Three Kings	288	S	3	167,84,74	15
57074	Wineberry	288	G	2	112,46,51	8
4067G	Lucent Ruby	288	G	1	197,63,91	19
32786	APO Grey	915	S	4	171,172,171	46
97488	Greywacke	201	S	3	103,110,113	19
7380K	Silver 2K Kinetic®	288	S	4	143,144,141	32
7182K	NZ Bright Silver Kinetic®	288	S	4	153,155,157	38
7134K	Natural Steel Kinetic®	915	S	4	118,120,121	23
57127	Antique Steel	288	S	4	80,81,83	12
58653	High Gloss Black	288	G	3	47,47,47	5
9045G	Lucent Char	288	G	1	77,74,69	10
58571	Mistletoe	288	G	3	12,110,60	15
6006S	Mamba Green	288	S	3	125,169,58	38
7382S	Pencarrow	288	S	3	110,124,116	23
6205S	Manfield	288	S	3	118,145,118	26
6204S	Shotover Street	288	S	3	0,131,72	20
57290	Hawthorn Green	915	S	3	45,68,57	8
81879	Deep Brunswick Green	959	G	3	45,62,58	7
6066G	Lucent Emerald	288	G	1	86,167,119	35
33641	Mannex White	901	M	3	243,246,241	91
57289	Cream Ripple	288	G	3	230,222,201	73
57124	Black Watered Silk	930	M	2	63,63,64	5
57242	Black Sand Texture	288	M	2	62,62,63	5
57243	Satin Black Ripple	953	M	1	63,64,64	5
51677	Graphite Ripple	953	M	1	118,118,117	18
85180	Black Hammertone	953	G	1	90,91,93	11
2046G	Lucent Gold	288	G	1	212,159,66	43

UV Index	Line # = Chemistry	Element
Very Good	5 288 PG288® Polyester	Gloss Level
Good	4 915 Duralloy Polyester	Gloss= >75%
Moderate	3 953 Hybrid	Low Sheen 30-55%
Low	2 910 Antigraffiti	RGB
Interior Only	1	Light Reflectancy

Gloss Measurement taken @ 60°
Satin 55-75%
Matt = < 30%
Red, Green & Blue Values
% of Light Reflected by the colour



AUSTRALIAN COLOUR SELECTOR

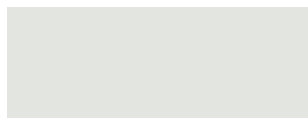


OXYTECH[®]
POWDER COATINGS

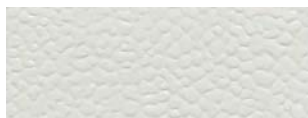
Supplying Oxyplast to Australia

Switched On[®]

Industrial Switchgear Colours



RAL 7035 Light Grey
PR12/60978/CS1 Satin



RAL 7035 Light Grey Wrinkle
PR12/60978/CW2



RAL 7032 Pebble Grey
PR12/60232/CS2 Satin



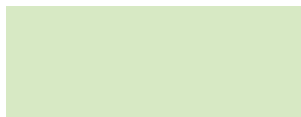
RAL 7032 Pebble Grey Wrinkle
PR12/60232/CW3



X15 Orange
PR12/6191/C59 Gloss



X15 Orange Wrinkle
PR12/6191/CW66



G32 Opaline
PR12/20837/C8 Gloss



G55 Lichen Green
PR12/20515/C6 Gloss



T45 Cootamundra
PR12/20835/C14 Gloss



B25 Aqua
PR12/30131/C3 Gloss



N35 Light Grey
PR12/60233/CS2 Satin



N42 Storm Grey
PR12/60242/C3 Gloss



G44 Palm Green
PR12/20620/C10 Gloss



G22 Serpentine
PR12/20836/C9 Gloss



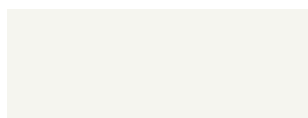
G34 Avocado
PR12/20237/C13 Gloss

OXYTECH[®]
POWDER COATINGS

Supplying Oxyplast to Australia

Traditional Living[®]

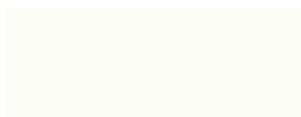
Australia's Lifestyle Essentials



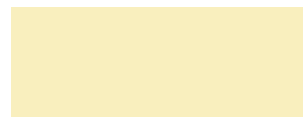
Surfmist (Off White)
PR12/4761/CS3 Satin



Moss Vale Sands
PR12/60185/CS5 Satin



Dover White
PR12/4526/C2 Gloss



Domain (Primrose)
PR12/70289/CS3 Satin



Gull Grey (Shale Grey)
PR12/60464/CS6 Satin



Birch Grey (Dune)
PR12/60545/CS2 Satin



Paperbark (Merino)
PR12/70307/CS16 Satin



Harvest (Wheat)
PR12/70309/CS2 Satin



Armour Grey (Windspray)
PR12/80745/CS4 Satin



Jasper (Mocca)
PR12/90408/CS6 Satin



Riversand (Stone)
PR12/90157/CS2 Satin



Sandbank (Sandstone)
PR12/70424/CS14 Satin



Tea Tree (Bushland)
PR12/80361/CS16 Satin



Woodland Grey (Slate Grey)
PR12/80358/CS7 Satin



Estate (Ironbark)
PR12/20372/CS12 Satin



Picton Green (Bronze Olive)
PR12/20375/CS6 Satin



Ironstone (Grey Rock)
PR12/80573/CS8 Satin

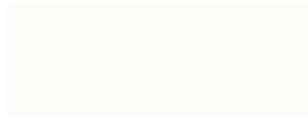


Blue Ridge (Blue Metal)
PR12/30384/CS5 Satin

Many of Oxytech's Traditional Living[®] colour range are designed to harmonise with pre-coated coil steel.

Chromatic Colour®

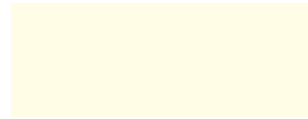
Spectrum of Colour



Bright White
PR12/4429/CS1 Gloss



RAL 9010 Pure White
PR12/4249/CS1 Satin



White Birch
PR12/70229/C11 Gloss



Magnolia
PR12/9695/C8 Gloss



Pearl White
PR12/4370/C4 Gloss



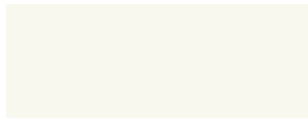
Shoji White
PR12/4752/CS10 Satin



Primrose
PR12/70437/C13 Gloss



Stone Beige
PR18/90492/CM11 Matt



Satin White
PR12/4371/CS1 Satin



Horizon White Wrinkle
PR12/4573/CW3



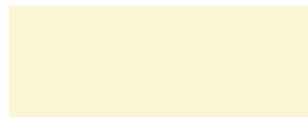
Rivergum Beige
PR12/70217/C1 Gloss



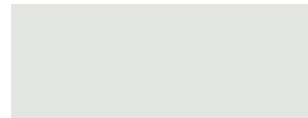
Pottery
PR12/90314/C1 Gloss



White Texture
PR12/4431/CT3



Oxytec Off White
PR16/70553/CM3 Matt



Oyster
PR12/60420/CS2 Satin



APO Grey
PR12/60169/CS2 Satin



Oyster Wrinkle
PR12/60420/CW3



APO Grey Wrinkle
PR12/60480/CW2

PH: 1300 353 655



Classic Cream (Smooth Cream)
PR12/70242/CS2 Satin



Wilderness (Rivergum)
PR12/20207/CS2 Satin



Pale Terracotta
PR12/90346/CS13 Satin



Federation Red
PR12/5399/C8 Gloss



Mist Green (Pale Eucalypt)
PR12/20209/CS4 Satin



Heritage Green
PR12/20381/C22 Gloss



Tuscan Red (Headland)
PR12/5535/CS15 Satin



Loft (Merlot)
PR12/90709/CS3 Satin



Cottage Green (Caulfield Green)
PR12/20546/CS2 Satin



Hedge (Plantation)
PR12/20376/CS27 Satin



Heritage Red (Manor Red)
PR12/5363/CS13 Satin



Monument (Coke)
PR12/81082/CS4 Satin



Cappice (Weathered Copper)
PR12/90465/CS5 Satin



Bowral Brown
PR12/90160/CS4 Satin



Hunter Red
PR12/5387/C15 Gloss



Satin Black
PR12/7087/CS1 Satin



Bluestone (Deep Ocean)
PR12/30330/CS10 Satin



Charcoal
PR12/80237/C7 Gloss



Claret
PR12/5362/C54 Gloss



Jet Black (RAL 9005)
PR12/710/C42 Gloss

Please allow for some colour variation between the coated coil steel and powder coated finish due to the different coating application processes.



Oxytec Silver Grey
RPR12/80973/CM3 Matt



Periwinkle
PR12/60397/C3 Gloss



Hunter Blue (RAL 5012)
PR12/30670/CS5 Satin



Mint Green
PR12/2399/C10 Gloss



Olde Pewter
PR12/80416/CS4 Satin



T33 Smoke Blue
PR12/30003/C2 Gloss



Blaze Blue
PR12/30075/C5 Gloss



Cabana Green
PR12/20357/C19 Gloss



Pewter Grey Texture
PR12/80332/CT8



Wizard
PR12/30284/CS8 Satin



French Blue
PR12/30213/C3 Gloss



Brunswick Green
PR12/20452/C1 Gloss



Notre Dame
PR12/60310/C11 Gloss



Navy
PR12/30267/CS3 Satin



Space Blue
PR12/30733/C4 Gloss



Hawthorn Green
PR12/20470/C22 Gloss



Berry Grey
PR12/80662/CS4 Satin



Oxytec Dark Grey
PR18/80495/CM9 Matt



Torres Blue
PR12/30191/CS4 Satin



Deep Brunswick Green
PR12/20222/C10 Gloss

"The Chosen Finish"

Classic Flair

Colours that Sparkle and Shine



Oxytec Citi Pearl
RPR16/80827/CM3 Matt



Camden Silver*
QPR12/11091/C7 Gloss

Oxytec White Lustre
RPR16/4707/CM3 Matt



Oxytec Silver Lustre
RPR16/60670/CM3 Matt



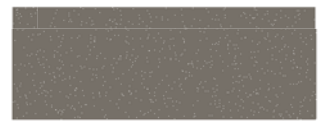
Silver Gloss
RPR12/11060/C7 Gloss



Oxytec Nepean Silver*
QPR12/11094/CS14 Satin



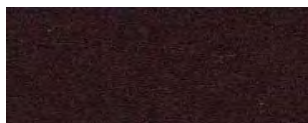
Oxytec Silver Pearl
QPR12/11168/CS46 Satin



Oxytec Pewter Pearl
RPR12/80826/CS3 Satin



Bright Silver*
QPR12/11109/CS55 Satin



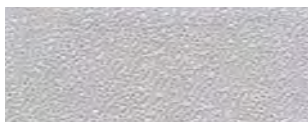
Oxytec Mahogany Pearl
RPR12/90551/C4 Satin



Colonial Bronze
QPR12/90443/C27 Gloss



Oxytec Gold
PR12/1319/C13 Gloss



Silver Texture
QPR12/11001/CT6



Charcoal Metallic Pearl
RPR12/80960/C14 Gloss



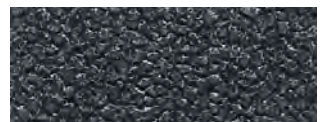
Oxytec Metallic Pearl
RPR16/90549/CM3 Matt



Black Onyx
PR12/708/CS113 Satin



Hammertone Silver Grey
WPR12/1122/CH2 Gloss



Hammertone Black
WPR12/1948/CH8 Gloss

* Denotes products that require a clear topcoat for exterior or high-wear use.



Lawn Green
PR12/20428/C13 Gloss



Bistro Orange
PR12/6186/C35 Gloss



Terracotta
PR12/90313/CS5 Satin



Coffee
PR12/90494/CS17 Satin



Turquoise
PR12/20447/C14 Gloss



R11 International Orange
PR12/6159/C29 Gloss



Vincent Brown
PR12/90162/CS3 Satin



Hammersley Brown
PR12/90371/CS5 Satin



Lemon Yellow
PR12/58094/C10 Gloss



Pink Blush
PR12/5701/C11 Gloss



Deep Charcoal
PR12/80359/CS5 Gloss



Auto Matt Black
PR18/7120/CM3 Matt



Golden Yellow
PR12/134/C36 Gloss



R13 Signal Red
PE50/5347/C22 Gloss



Black Texture (Interior)
FF165/737/CT4



Black Custom
PR12/708/CS102 Satin



Y14 Traffic Yellow
PR12/58128/C21 Gloss



Flame Red
PR12/5225/C33 Gloss



Antique White*
QPR12/4465/CA5



Antique Light Silver*
QPR12/1410/CA2



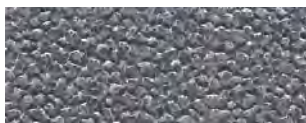
Antique Dark Silver*
QPR12/1410/CA7



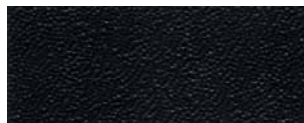
Antique Gold*
RPR12/1432/CA8



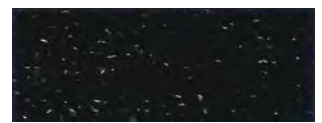
Silver Wrinkle*
QPR12/1148/CA5



Graphite Wrinkle (Interior)
QFF175/1417/CA57



Ebony Black Texture
PE50/7160/CT5



Black Wrinkle
PR12/7112/CW1 Gloss

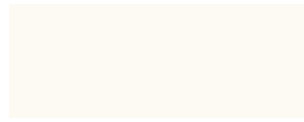
Work Mates[®] Vehicle and Equipment Colours



Bright Red
PR12/5691/C3 Gloss



Colorado White
PR12/4610/CS5 Satin



040 White (Toyota®)
PR12/4726/CS3 Satin



058 White (Toyota®)
PR12/4520/CS9 Satin



Dozer Yellow (Caterpillar®)
PR12/90717/C4 Gloss



JD Yellow (RAL 1018)
PR12/159/C46 Gloss



Alpine White (Isuzu®)
PR12/4651/C7 Gloss



Cool White (Ranger White)
PR12/4801/CS6 Satin



JD Green
PR12/20726/C Gloss



Olive Drab
PR18/20427/CM8 Matt

[^]Denotes the vehicle manufacturer from which the colour was matched by Oxytech[®]. Toyota[®] is a trademark of Toyota Jidosha Kabushiki Kaisha, Isuzu[®] is a trademark of Isuzu Jidosha KK, Caterpillar[®] is a trademark of Caterpillar Inc and no rights in the formerly mentioned marks are claimed by Oxytech Powder Coatings Pty Ltd.

AUSTRALIA
e: salesoz@interpon.com
www.interpon.com.au
www.specifyinterpon.com.au

Tel: 1800 630 516
Fax: 1800 650 786

NEW ZEALAND
e: salesnz@interpon.com
www.interpon.co.nz

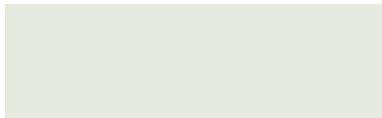
Tel: 0800 150 527
Fax: 0800 809 679



green building council australia
MEMBER 2016-2017

Interpon Textura™ Anti-Mar Powder Coating

Stocked Range



Textura™ Surfmist GA336A



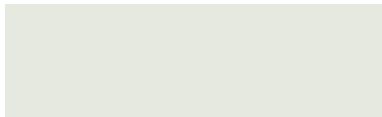
Textura™ Primrose GD331A



Textura™ Dune GL352A



Textura™ Paperbark GD314A



Textura™ Silver GY35LA



Textura™ Woodland Grey GL333A



Textura™ Jasper GM314A



Textura™ Deep Ocean GJ301A



Textura™ Monument GL329A



Textura™ Black GN305A

For more information please refer to the Interpon Textura™ Technical Data Sheet or contact our Customer Service Team on 1800 630 516 or salesoz@interpon.com.



Free Interpon Textura™ Swatch Set

Feel the Interpon Textura™ difference for yourself!

Contact your Interpon Sales Representative for a free sample swatch set.



Interpon®
POWDER COATINGS

DISCLAIMER

AkzoNobel endeavours to ensure the information contained in this publication is correct at the time of printing. All products referred to and any technical advice provided is subject to the standard terms and conditions of sale of the AkzoNobel supplying company. Unless otherwise agreed by us in writing, any contract to purchase products referred to in this color card and any advice that we give in connection with the supply of products are subject to our standard conditions of sale. Typical end uses for Interpon products are displayed in this publication using actual projects and representative images. Textura™ is a trademark of Akzo Nobel Pty Limited. Interpon® is a registered trademark of Akzo Nobel International BV. © Copyright 2016 Akzo Nobel Pty Limited
ABN 59 000 119 424. August 2016

Exterior Durable Color Range

Interpon Excel™

Degassing technology provides smoother films over porous substrates. Features COLORBOND® steel standard color range.



Excel™ Pearl White®
Gloss GA029A



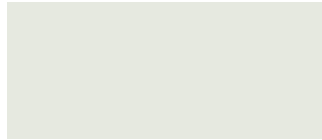
Excel™ Domain®
Matt GD230A



Excel™ Primrose
Gloss GD031A



Excel™ Classic Cream®
Matt GD245A [Satin](#) GU145A



Excel™ Surfmist®
Matt GA236A [Satin](#) GB136A



Excel™ Evening Haze®
Matt GM235A [Satin](#) GT135A



Excel™ Shale Grey®
Matt GL284A [Satin](#) GP184A



Excel™ Dune®
Matt GL252A [Satin](#) GP152A



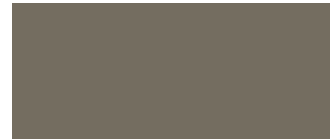
Excel™ Harvest®
Matt GD215A



Excel™ Paperbark®
Matt GD214A [Satin](#) GU114A



Excel™ Gully™
Matt GM242A



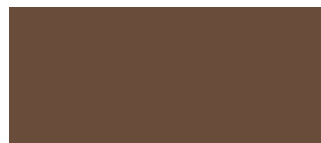
Excel™ Jasper®
Matt GM214A [Satin](#) GT114A



Excel™ Headland®
Matt GG219A [Satin](#) GV119A



Excel™ Manor Red®
Matt GG262A [Satin](#) GV162A



Excel™ Terrain™
Matt GM243A



Excel™ Woodland Grey®
Matt GL205A [Satin](#) GP105A



Excel™ Riversand®
Matt GM204A



Excel™ Windspray®
Matt GL266A [Satin](#) GP166A



Excel™ Basalt™
Matt GP208A



Excel™ Ironstone®
Matt GL236A [Satin](#) GP136A



Excel™ Bushland®
Matt GK203A [Satin](#) GS103A



Excel™ Wallaby™
Matt GL210A



Excel™ Deep Ocean®
Matt GJ203A [Satin](#) GQ103A



Excel™ Monument®
Matt GL229A [Satin](#) GP129A



Excel™ Cove™
Matt GD274A



Excel™ Pale Eucalypt®
Matt GK236A [Satin](#) GS136A



Excel™ Wilderness®
Matt GK289A [Satin](#) GS189A



Excel™ Mangrove™
Matt GK277A



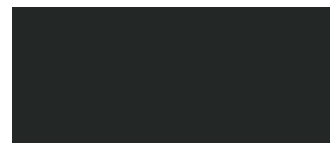
Excel™ Cottage Green®
Matt GK274A [Satin](#) GS174A



Excel™ Hawthorn Green
Gloss GK030A



Excel™ Heritage Green
Gloss GK044A



Excel™ Charcoal
Gloss GL035A [Satin](#) GL180A

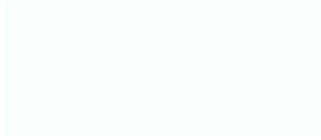


Excel™ Night Sky®
Matt GN231A [Satin](#) GN121A

Colors displayed on this color card are a guide only and have been matched as close as possible to Interpon production standards under daylight conditions. Due to the nature of the printing process some degree of color and gloss level variation may occur. Where more than one finish is available product color may vary. We recommend that you use production line prepared samples for final color selection or approval.

Most gloss finishes on this card are available in EC technology as Made to Order MiniB.

Interpon Living Series A classic range of local favourites in subtle and neutral shades.



Bright White
Gloss GA030A



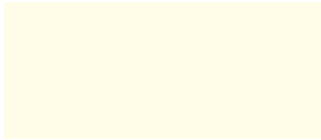
White Satin
Satin GA124A



Pearl White
Gloss GA078A



Shoji White
Satin GA160A



White Birch
Gloss GA057A



Off White
Matt GA211A



Oyster Grey
Matt GL258A



APO Grey
Satin GL107A



Primrose
Gloss GD037A



Magnolia
Gloss GD025A



Almond Ivory
Gloss GD016A



Doeskin
Satin GD188A



Rivergum
Gloss GD042A



Barley
Gloss GD007A



Stone Beige
Matt GD247A



Pottery
Satin GM175A



Storm Grey N42
Gloss GL060A



Olde Pewter
Satin GL175A



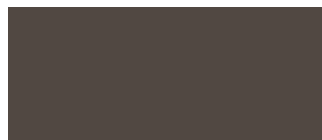
Claret
Satin GG142A



Transformer Grey
Gloss GL031A



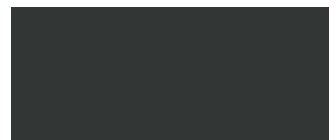
Notre Dame
Gloss GL040A



Hammersley Brown
Satin GM100A



Roseberry Grey
Gloss GL015A



Coral Black
Gloss GN063A



Custom Black
Matt GN248A



Black Satin
Satin GN150A

Interpon Vivica™ A soft metallic finish, providing luxury and richness with its timeless pearlescent lustre.



Vivica™ Ultra Silver
Gloss GY070A



Vivica™ Nobel Silver Pearl
Satin GY119A



Vivica™ Mercury Silver
Gloss GW003K



Vivica™ Citi®
Matt GL211A



Vivica™ Storm Front
Matt GL249A



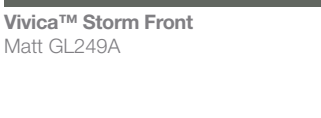
Vivica™ Black Onyx
Gloss GY042A



Vivica™ Palladium Silver Pearl
Satin GY184C



Vivica™ Asteroid Pearl
Matt GY270A



Vivica™ Charcoal Pearl
Matt GY237A



Vivica™ Charcoal Metallic
Gloss GM019A

Interpon Color Vitality

Bright, vibrant and **UV stable**, perfect for providing a dramatic visual.



Brilliant Yellow
Gloss GE087A



Lykra Strip
Gloss GK063A



Sensation
Gloss GF049A



Lobster
Satin GG155A



Viper Green
Gloss GK051A



Shamrock Green
Gloss GK043A



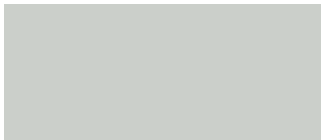
Bondi Blue
Gloss GJ045A



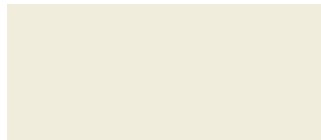
Jaybird
Satin GJ174A

Interpon Anodic

Soft metallic tones, ideal when seeking alternative coatings to anodising.



Anodic Clear
Matt GY221A



Anodic Off White
Matt GD227A



Anodic Silver Grey
Matt GL237A



Anodic Natural
Matt GY235A



Anodic Champagne
Matt GY276A



Anodic Bronze
Satin GY114A



Anodic Dark Grey
Matt GL213A

Interpon Sablé™

A novel sandy appearance offering enhanced surface scuff resistance. Allows seamless fusion with both natural buildings and rendered finishes.



Sablé™ Grey Nurse
Texture GL320A



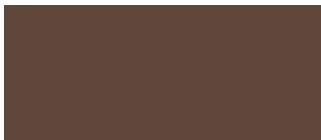
Sablé™ Silver
Texture GY301A



Sablé™ Brilliance
Texture GL277A



Sablé™ Asteroid
Texture GN271A



Sablé™ Core Ten
Texture GX350A



Sablé™ Bass
Texture GN297A



Sablé™ Black
Texture GN341A

Interpon Précis™

Interpon's next generation smooth low gloss 'anodised look' powder coatings.



Précis™ Natural Shimmer
Matt GY21AA



Précis™ Dark Bronze
Matt GY20BA

Interior Color Range

Interpon Color Energy

A collection of striking colors to accent modern features.



Lemon Yellow
Gloss ME068A  



Flaming Red
Gloss MG045A  



Blaze Blue
Gloss MJ034A 



Orange X15
Gloss MF035A  



Yellow Gold
Gloss ME038A  



Signal Red
Gloss MG036A  



French Blue
Gloss MJ067A 



Deep Pool
Satin MK002A 



Safety Yellow
Gloss ME096A  




Flame Red
Gloss MG071A  



Space Blue
Gloss MJ008A 



Lawn Green
Gloss MK038A 


Interpon Ripple

A distinctive course texture effect which also allows masking of substrate surface defects.



Ripple White
Gloss MA494A 



Ripple RAL 7035
Gloss ML435A 



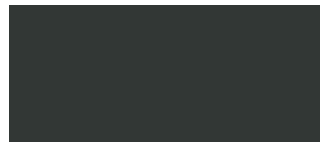
Ripple APO Grey
Gloss ML463A 



Ripple Graphite
Matt EY422A 



Ripple X15 Orange
Gloss MF406A  



Ripple Black Leather
Matt EN432A 



Ripple Black
Gloss MN427A 

Interpon Protective Primer

Cost effective substrate protection. Interpon top-coat required to complete the system.



PZ560 Zinc
Primer BL103K



PZ790
Primer ALZ90F




Easy Clean Clear
Gloss UZ607I




Bright Silver
Matt MW201T 




MetaPrep™ Grey
Primer EL286A

 Not recommended for use where high UV exposure is likely.

 For internal use only

 For General Industrial Range

 Are recommended to be over coated with Interpon 810 Clear powder coating for exterior use or aggressive internal applications

Interpon Clears

Interpon Silvers



Name	Technology	Code	Gloss	Series	LRV
Almond Ivory	D1000	GD016A	Gloss	Living Series	54%
Anodic Bronze	D1000	GY114A	Satin	Anodic	12%
Anodic Champagne	D1000	GY276A	Matt	Anodic	42%
Anodic Clear	D1000	GY221A	Matt	Anodic	55%
Anodic Dark Grey	D1000	GL213A	Matt	Anodic	7%
Anodic Natural	D1000	GY235A	Matt	Anodic	42%
Anodic Off White	D1000	GD227A	Matt	Anodic	74%
Anodic Silver Grey	D1000	GL237A	Matt	Anodic	48%
APO Grey	D1000	GL107A	Satin	Living Series	46%
Barley	D1000	GD007A	Gloss	Living Series	63%
Black Satin	D1000	GN150A	Satin	Living Series	4%
Blaze Blue	TC	MJ034A	Gloss	Color Energy	18%
Bondi Blue	D1000	GJ045A	Gloss	Color Vitality	20%
Bright Silver	610	MW201T	Matt	Silvers	43%
Bright White	D1000	GA030A	Gloss	Living Series	81%
Brilliant Yellow	D1000	GE087A	Gloss	Color Vitality	66%
Claret	D1000	GG142A	Satin	Living Series	6%
Coral Black	D1000	GN063A	Gloss	Living Series	4%
Custom Black	D1000	GN248A	Matt	Living Series	4%
Deep Pool	TC	MK002A	Satin	Color Energy	20%
Doeskin	D1000	GD188A	Satin	Living Series	44%
Easy Clean Clear	200	UZ607I	Gloss	Clears	59%
Excel™ Basalt™	D1000 Excel™	GP208A	Matt	Excel™	14%
Excel™ Bushland®	D1000 Excel™	GK203A	Matt	Excel™	25%
Excel™ Bushland®	D1000 Excel™	GS103A	Satin	Excel™	24%
Excel™ Charcoal	D1000 Excel™	GL035A	Gloss	Excel™	6%
Excel™ Charcoal	D1000 Excel™	GL180A	Satin	Excel™	7%
Excel™ Classic Cream®	D1000 Excel™	GD245A	Matt	Excel™	67%
Excel™ Classic Cream®	D1000 Excel™	GU145A	Satin	Excel™	67%
Excel™ Cottage Green®	D1000 Excel™	GK274A	Matt	Excel™	11%
Excel™ Cottage Green®	D1000 Excel™	GS174A	Satin	Excel™	10%
Excel™ Cove™	D1000 Excel™	GD274A	Matt	Excel™	29%
Excel™ Deep Ocean®	D1000 Excel™	GJ203A	Matt	Excel™	9%
Excel™ Deep Ocean®	D1000 Excel™	GQ103A	Satin	Excel™	9%

Name	Technology	Code	Gloss	Series	LRV
Excel™ Domain®	D1000 Excel™	GD230A	Matt	Excel™	67%
Excel™ Dune®	D1000 Excel™	GL252A	Matt	Excel™	41%
Excel™ Dune®	D1000 Excel™	GP152A	Satin	Excel™	40%
Excel™ Evening Haze®	D1000 Excel™	GM235A	Matt	Excel™	51%
Excel™ Evening Haze®	D1000 Excel™	GT135A	Satin	Excel™	52%
Excel™ Gully™	D1000 Excel™	GM242A	Matt	Excel™	20%
Excel™ Harvest®	D1000 Excel™	GD215A	Matt	Excel™	45%
Excel™ Hawthorn Green	D1000 Excel™	GK030A	Gloss	Excel™	7%
Excel™ Headland®	D1000 Excel™	GG219A	Matt	Excel™	13%
Excel™ Headland®	D1000 Excel™	GV119A	Satin	Excel™	13%
Excel™ Heritage Green	D1000 Excel™	GK044A	Gloss	Excel™	6%
Excel™ Ironstone®	D1000 Excel™	GL236A	Matt	Excel™	11%
Excel™ Ironstone®	D1000 Excel™	GP136A	Satin	Excel™	11%
Excel™ Jasper®	D1000 Excel™	GM214A	Matt	Excel™	15%
Excel™ Jasper®	D1000 Excel™	GT114A	Satin	Excel™	16%
Excel™ Mangrove™	D1000 Excel™	GK277A	Matt	Excel™	17%
Excel™ Manor Red®	D1000 Excel™	GG262A	Matt	Excel™	9%
Excel™ Manor Red®	D1000 Excel™	GV162A	Satin	Excel™	9%
Excel™ Monument®	D1000 Excel™	GL229A	Matt	Excel™	8%
Excel™ Monument®	D1000 Excel™	GP129A	Satin	Excel™	8%
Excel™ Night Sky®	D1000 Excel™	GN231A	Matt	Excel™	4%
Excel™ Night Sky®	D1000 Excel™	GN121A	Satin	Excel™	4%
Excel™ Pale Eucalypt®	D1000 Excel™	GK236A	Matt	Excel™	25%
Excel™ Pale Eucalypt®	D1000 Excel™	GS136A	Satin	Excel™	24%
Excel™ Paperbark®	D1000 Excel™	GD214A	Matt	Excel™	50%
Excel™ Paperbark®	D1000 Excel™	GU114A	Satin	Excel™	50%
Excel™ Pearl White®	D1000 Excel™	GA029A	Gloss	Excel™	89%
Excel™ Primrose	D1000 Excel™	GD031A	Gloss	Excel™	72%
Excel™ Riversand®	D1000 Excel™	GM204A	Matt	Excel™	33%
Excel™ Shale Grey®	D1000 Excel™	GL284A	Matt	Excel™	49%
Excel™ Shale Grey®	D1000 Excel™	GP184A	Satin	Excel™	49%
Excel™ Surfmist®	D1000 Excel™	GA236A	Matt	Excel™	69%
Excel™ Surfmist®	D1000 Excel™	GB136A	Satin	Excel™	66%
Excel™ Terrain™	D1000 Excel™	GM243A	Matt	Excel™	9%

Living Colors

People are driven by emotion – and color elicits different emotions in people. As the world's largest coatings company, no other company has more experience in color trends than AkzoNobel. Home to the Aesthetics Centre, our in-house color and design experts anticipate and predict movements in trends that affect color and coating choices for architectural applications. We have drawn on the knowledge of our global Aesthetics Centre, along with our own Australian insights, to produce this Residential and Industrial Powder Coatings Collection - Living Colors.

The Interpon Range

Interpon TC

Interpon TC is a durable powder coating designed to meet the specific needs of the Industrial and General Trade Coater markets. The Interpon TC range of powder coatings feature higher transfer efficiency, excellent coverage and high levels of damage resistance. Interpon TC is available in an extensive range of brighter colors, ripples, textures, and special effect powders.

Interpon D1000

Interpon D1000 is a high durable powder coating developed on in-house resin technology providing an ideal finish for all external applications. **Interpon D1000** offers the applicator excellent application performance with superior mileage, high powder utilisation and faster curing, making it the most versatile and best performing product in its class.



Name	Technology	Code	Gloss	Series	LRV
Excel™ Wallaby™	D1000 Excel™	GL210A	Matt	Excel™	18%
Excel™ Wilderness®	D1000 Excel™	GK289A	Matt	Excel™	19%
Excel™ Wilderness®	D1000 Excel™	GS189A	Satin	Excel™	18%
Excel™ Windspray®	D1000 Excel™	GL266A	Matt	Excel™	28%
Excel™ Windspray®	D1000 Excel™	GP166A	Satin	Excel™	27%
Excel™ Woodland Grey®	D1000 Excel™	GL205A	Matt	Excel™	12%
Excel™ Woodland Grey®	D1000 Excel™	GP105A	Satin	Excel™	12%
Flame Red	TC	MG071A	Gloss	Color Energy	11%
Flaming Red	TC	MG045A	Gloss	Color Energy	15%
French Blue	TC	MJ067A	Gloss	Color Energy	13%
Hammersley Brown	D1000	GM100A	Satin	Living Series	8%
Jaybird	D1000	GJ174A	Satin	Color Vitality	11%
Lawn Green	TC	MK038A	Gloss	Color Energy	12%
Lemon Yellow	TC	ME068A	Gloss	Color Energy	66%
Lobster	D1000	GG155A	Satin	Color Vitality	12%
Lycra Strip	D1000	GK063A	Gloss	Color Vitality	53%
Magnolia	D1000	GD025A	Gloss	Living Series	63%
MetaPrep™ Grey	700	EL286A	Primer	Primer	-
Notre Dame	D1000	GL040A	Gloss	Living Series	16%
Off White	D1000	GA211A	Matt	Living Series	71%
Olde Pewter	D1000	GL175A	Satin	Living Series	20%
Orange X15	TC	MF035A	Gloss	Color Energy	28%
Oyster Grey	D1000	GL258A	Matt	Living Series	60%
Pearl White	D1000	GA078A	Gloss	Living Series	89%
Pottery	D1000	GM175A	Satin	Living Series	39%
Précis™ Dark Bronze	D1000	GY20BA	Matt	Précis™	6%
Précis™ Natural Shimmer	D1000	GY21AA	Matt	Précis™	46%
Primrose	D1000	GD037A	Gloss	Living Series	70%
PZ560 Zinc	100	BL103K	Primer	Primer	-
PZ790	100	ALZ90F	Primer	Primer	-
Ripple APO Grey	TC	ML463A	Gloss	Ripple	43%
Ripple Black	TC	MN427A	Gloss	Ripple	4%
Ripple Black Leather	700	EN432A	Matt	Ripple	4%
Ripple Graphite	700	EY422A	Matt	Ripple	10%
Ripple RAL 7035	TC	ML435A	Gloss	Ripple	58%

Name	Technology	Code	Gloss	Series	LRV
Ripple White	TC	MA494A	Gloss	Ripple	92%
Ripple X15 Orange	TC	MF406A	Gloss	Ripple	29%
Rivergum	D1000	GD042A	Gloss	Living Series	65%
Roseberry Grey	D1000	GL015A	Gloss	Living Series	12%
Sablé™ Asteroid	D1000	GN271A	Texture	Sablé™	11%
Sablé™ Bass	D1000	GN297A	Texture	Sablé™	9%
Sablé™ Black	D1000	GN341A	Texture	Sablé™	4%
Sablé™ Brilliance	D1000	GL277A	Texture	Sablé™	16%
Sablé™ Core Ten	D1000	GX350A	Texture	Sablé™	8%
Sablé™ Grey Nurse	D1000	GL320A	Texture	Sablé™	58%
Sablé™ Silver	D1000	GY301A	Texture	Sablé™	39%
Safety Yellow	TC	ME096A	Gloss	Color Energy	45%
Sensation	D1000	GF049A	Gloss	Color Vitality	75%
Shamrock Green	D1000	GK043A	Gloss	Color Vitality	13%
Shoji White	D1000	GA160A	Satin	Living Series	78%
Signal Red	TC	MG036A	Gloss	Color Energy	13%
Space Blue	TC	MJ008A	Gloss	Color Energy	7%
Stone Beige	D1000	GD247A	Matt	Living Series	47%
Storm Grey N42	D1000	GL060A	Gloss	Living Series	30%
Transformer Grey	D1000	GL031A	Gloss	Living Series	30%
Viper Green	D1000	GK051A	Gloss	Color Vitality	27%
Vivica™ Asteroid Pearl	D1000	GY270A	Matt	Vivica™	10%
Vivica™ Black Onyx	D1000	GY042A	Gloss	Living Series	7%
Vivica™ Charcoal Metallic	D1000	GM019A	Gloss	Vivica™	7%
Vivica™ Charcoal Pearl	D1000	GY237A	Matt	Vivica™	6%
Vivica™ Citi®	D1000	GL211A	Matt	Vivica™	44%
Vivica™ Mercury Silver	D1000	GW003K	Gloss	Vivica™	51%
Vivica™ Nobel Silver Pearl	D1000	GY119A	Satin	Vivica™	31%
Vivica™ Palladium Silver Pearl	D1000	GY184C	Satin	Vivica™	30%
Vivica™ Storm Front	D1000	GL249A	Matt	Vivica™	13%
Vivica™ Ultra Silver	D1000	GY070A	Gloss	Vivica™	41%
White Satin	D1000	GA124A	Satin	Living Series	89%
White Birch	D1000	GA057A	Gloss	Living Series	85%
Yellow Gold	TC	ME038A	Gloss	Color Energy	52%

Colorbond® and ® color names are registered trademarks of BlueScope Steel Limited

Interpon D1000 Excel™

Interpon D1000 Excel™ has been developed for application over porous substrates, such as hot-dipped galvanised (HDG) steel and castings, providing greater application tolerance and improved final film appearance. **Interpon D1000 Excel™** is also suitable for aluminium and steel substrates.

Interpon D Approved Applicators

AkzoNobel has developed the Interpon D Approved Applicators Network to support the Interpon D Global Warranty Program. This program is designed to ensure the Interpon powder coating you choose is applied correctly, meeting Interpon Powder Coatings warranty requirements to local and international standards. To view all Interpon D Approved Applicators please visit www.specifyinterpon.com.au.

For more information or to become an Interpon D approved applicator please speak with your Interpon technical representative.

Color Freedom

AkzoNobel values the importance of color and finish in your design and understands that color expression is an extension of your project. Why not take advantage of our made-to-order color service. For smaller projects down to 20kg, **Interpon MiniB™** and **Interpon MiniB™ Micro** provides fast service on small batch made-to-order colors that are specific to your needs. Some conditions do apply such as choice of color and product. Please contact the Interpon Customer Care Team for additional advice.

How to Specify Interpon Powder Coatings

Once you have chosen **Interpon** Powder Coatings for your project, it's important to use the correct product. So we make specifying **Interpon** powder coatings easy. Simply:

- Nominate the **Interpon** product. e.g. **Interpon D1000**.
- Nominate the color, finish and product code. e.g. Anodic Natural Matt GY235A.

To find your nearest **Interpon** applicator, please contact your **Interpon** representative or the **Interpon** Customer Care Team.